

1. Equipment Installation

Use the key in the accessory box to unlock the back of the device.



2. Parking terminal support POE supply. Connect this port to POE switch.



3. Obtain the IP address.

The default static IP address is 192.168.1.128

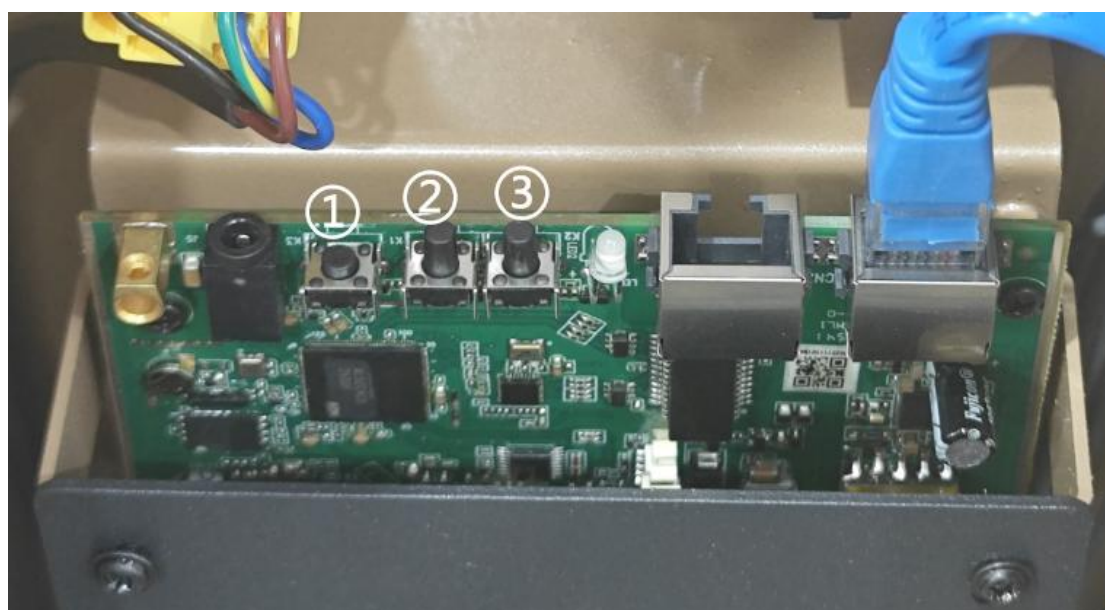
You can long press button ③ to broadcast the current IP address.

If DHCP is available on your network:

Press and hold button ② until you hear a beep.

Press button ② briefly once.

The device will switch to DHCP mode and broadcast the obtained IP address.



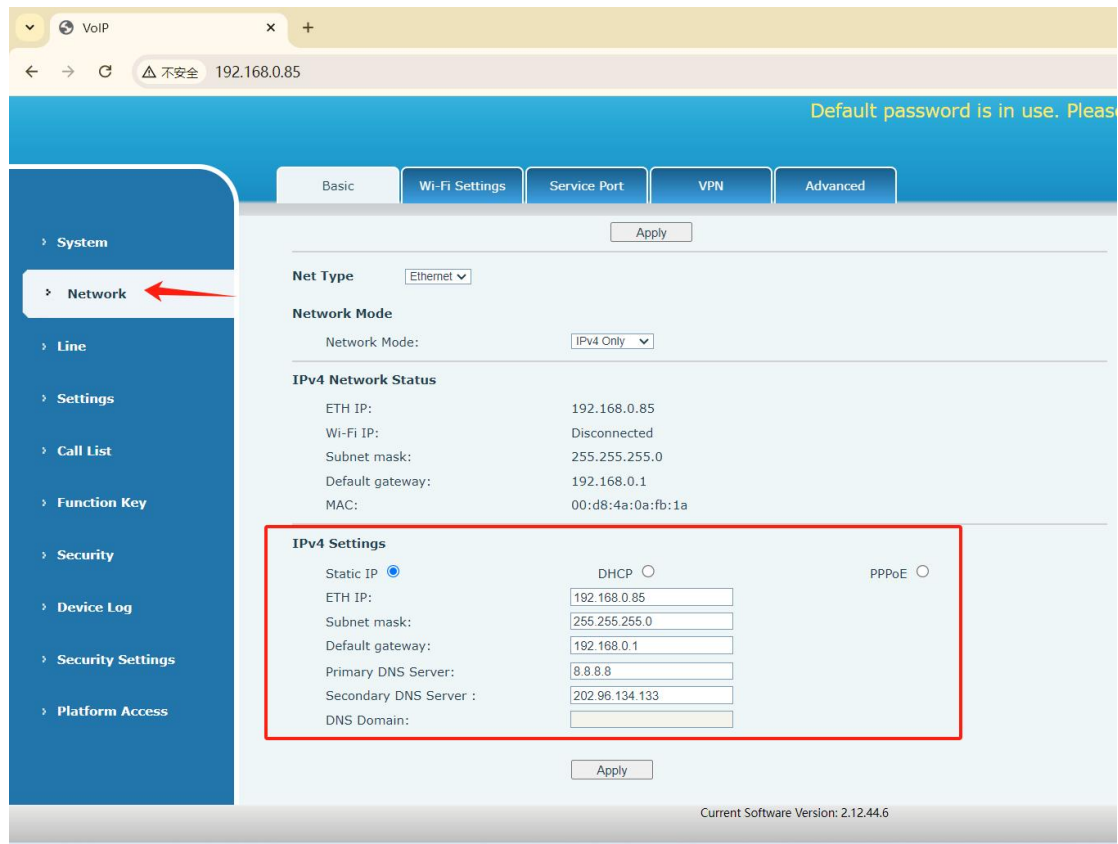
Long press button ① for factory reset, **Do not operate unless necessary.**

4. Enter the IP on the browser (recommend Google Chrome)

Both default username and password are **admin**



5. Network Setting. Here to change the IP manually if need.



Default password is in use. Please change

Basic Wi-Fi Settings Service Port VPN Advanced

System

Network

Line

Settings

Call List

Function Key

Security

Device Log

Security Settings

Platform Access

Net Type: Ethernet

Network Mode: IPv4 Only

IPv4 Network Status

ETH IP: 192.168.0.85

Wi-Fi IP: Disconnected

Subnet mask: 255.255.255.0

Default gateway: 192.168.0.1

MAC: 00:d8:4a:0a:fb:1a

IPv4 Settings

Static IP ☒ DHCP ☐ PPPoE ☐

ETH IP: 192.168.0.85

Subnet mask: 255.255.255.0

Default gateway: 192.168.0.1

Primary DNS Server: 8.8.8.8

Secondary DNS Server: 202.96.134.133

DNS Domain:

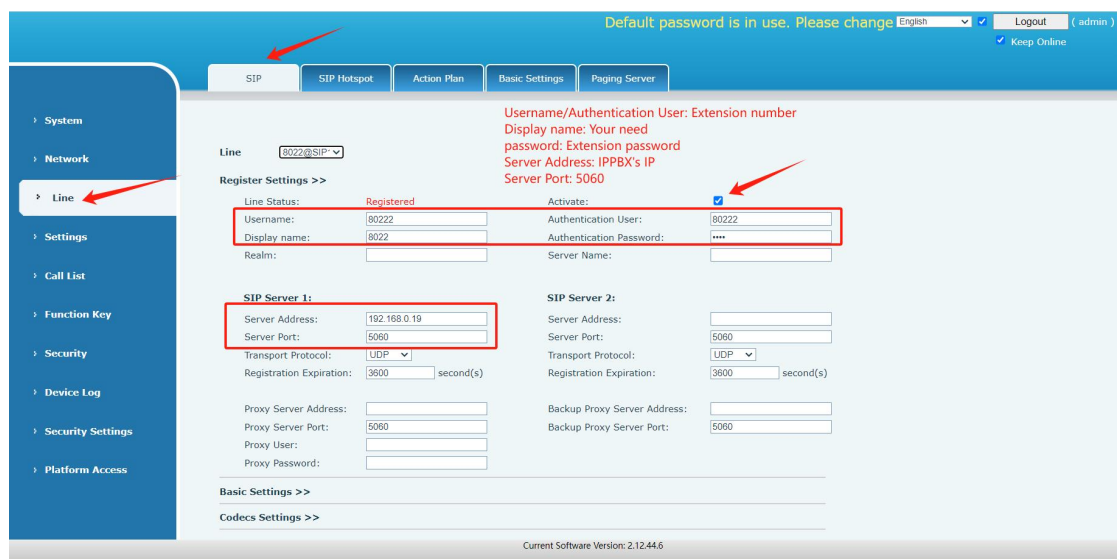
Apply

Current Software Version: 2.12.44.6

6. SIP Setting.

Line>SIP. The pic below only for reference, fill in your actual info please.

Then click on supply to save.



Default password is in use. Please change English Logout (admin) Keep Online

SIP SIP Hotspot Action Plan Basic Settings Paging Server

System

Network

Line

Settings

Call List

Function Key

Security

Device Log

Security Settings

Platform Access

Line: 8022@SIP

Register Settings >>

Line Status: Registered Activate: ☒

Username: 8022 Authentication User: 8022

Display name: 8022 Authentication Password: ****

Realn: Server Name:

SIP Server 1:

Server Address: 192.168.0.19

Server Port: 5060

Transport Protocol: UDP

Registration Expiration: 3600 second(s)

Proxy Server Address:

Proxy Server Port: 5060

Proxy User:

Proxy Password:

SIP Server 2:

Server Address:

Server Port: 5060

Transport Protocol: UDP

Registration Expiration: 3600 second(s)

Backup Proxy Server Address:

Backup Proxy Server Port: 5060

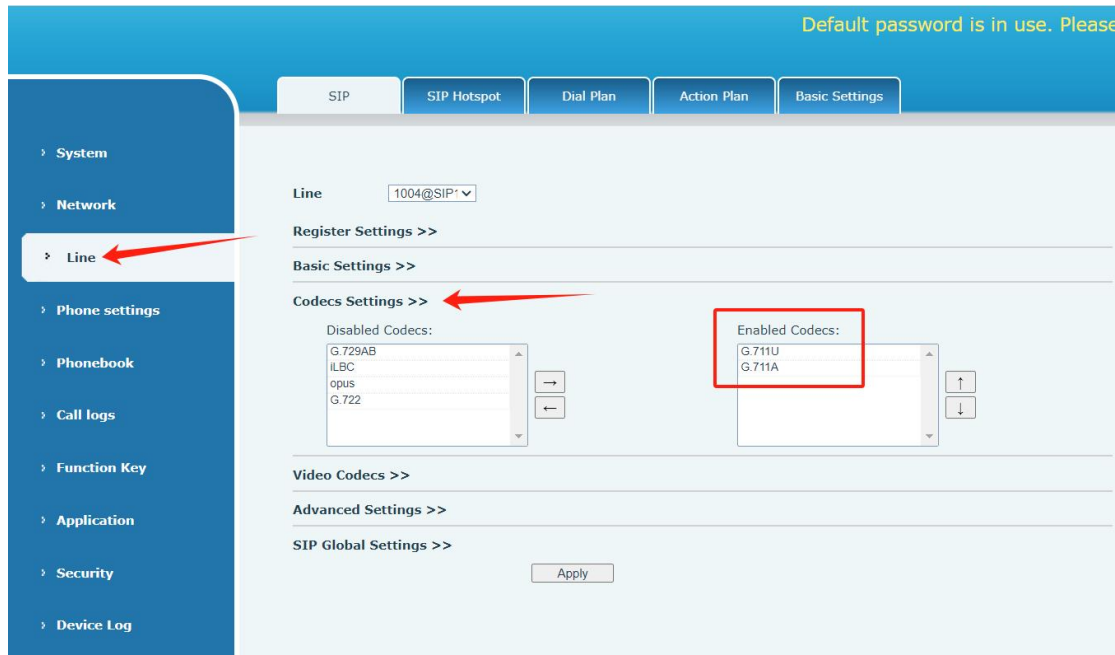
Basic Settings >>

Codecs Settings >>

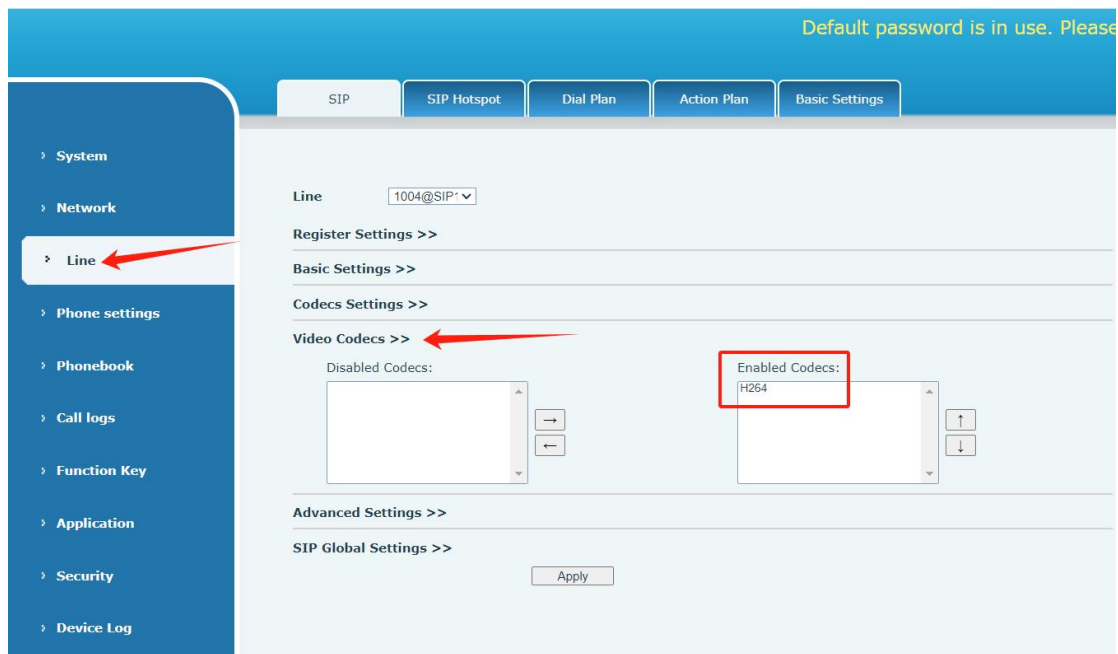
Current Software Version: 2.12.44.6

Codecs Settings

Audio Codecs. If you do not need such G.722 codecs etc. We recommend only enable G.711U&G.711A.



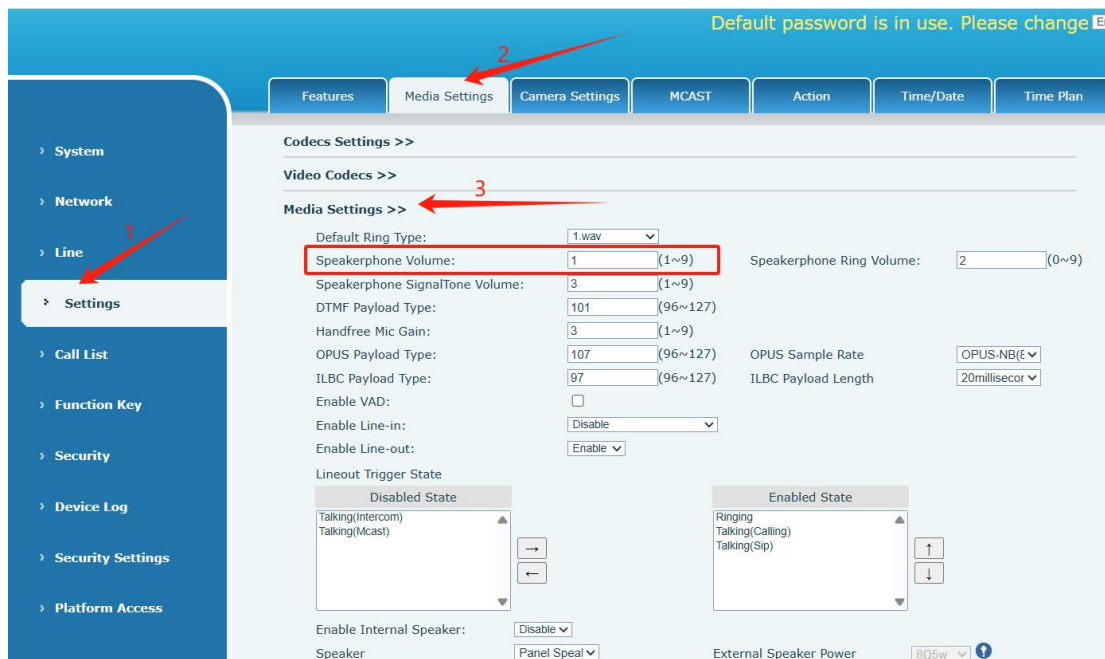
Video Codecs. Enable H.264



7. Volume Setting.

Settings>Media Settings>Media Settings.

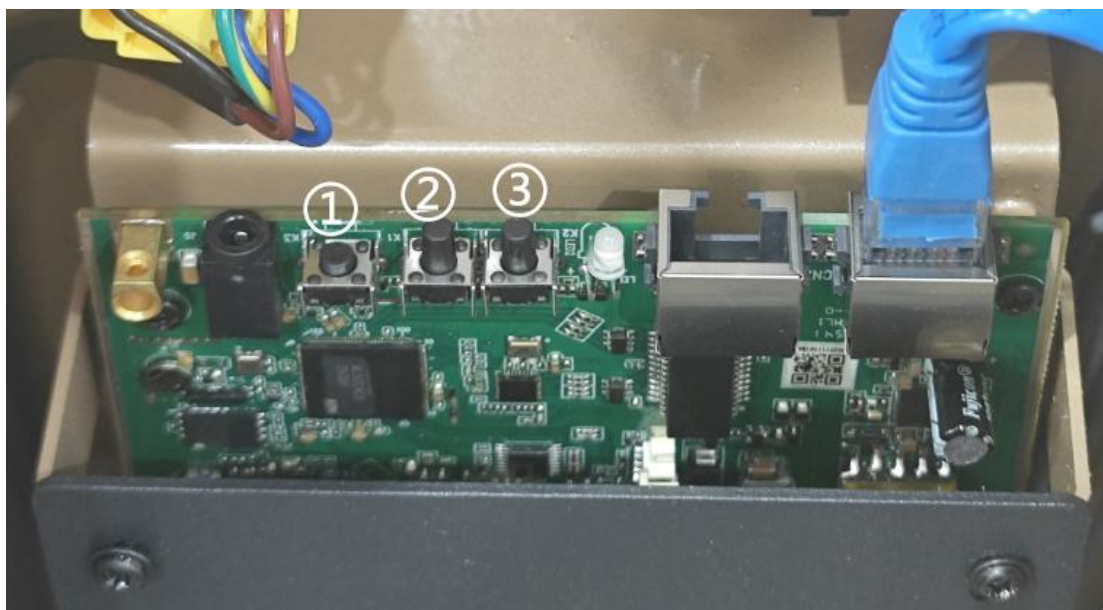
The bigger number the louder volume.



You can also adjust the volume by pressing the buttons.

Press button ② once for volume up.

Press button ③ once for volume down.



8. Function Key Setting.

When you press the function key, the device will call out the set phone number. It can also be used to set the IP address, press the function key

to make an IP direct call.

System

Network

Line

Device Settings

Call List

Function Key

Security

Device Log

Security Settings

Platform Access

Function Key

Function Key Settings >>

Key	Type	Name	Value			Subtype	Line	Media
DSS Key 1	Memory Key	Video Phone	1000	+	-	Speed Dial	1010@SIP1	DEFAULT
DSS Key 2	None			+	-	None	AUTO	DEFAULT

Apply

Programmable Key Settings >>

Advanced Settings >>

Type: Memory key
Name: any
Value: Call destination, an extension number
Subtype: Speed Dial
Line: select the available SIP